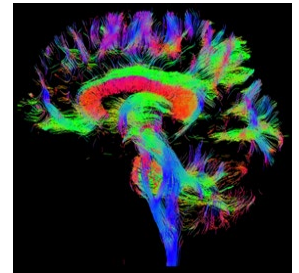


# PREBO-6

## Prediction of childhood Brain Outcomes in infants born preterm using neonatal MRI and concurrent clinical biomarkers

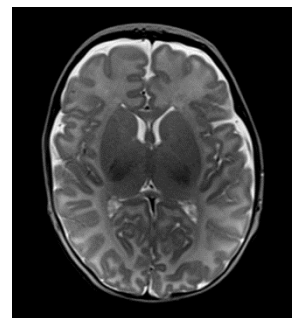
**Thank you for participating in the PPREMO or PREBO study when your child was born.** We are excited to let you know that we are now continuing these studies and are inviting all families to a follow-up assessment at 6 years of age.

We are extending the project to learn if our early MRI scans or the clinical assessments can predict a child's outcomes in early childhood. If this is found to be the case, then in the future, families of preterm babies will be provided with information on their child's likely development much earlier. This will enable families to receive support and their children to be offered earlier treatments to help them with their movement, learning or behavioural development.



### Benefits

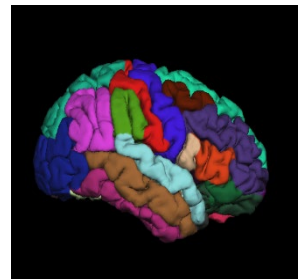
Your child will receive a comprehensive assessment of their development and you will be provided with a report. This report can also be made available to your child's Pediatrician/GP.



### What's Involved?

There are three parts to this study which will be offered over 2 days:

- Movement, learning and language assessments (including parent questionnaires) (preterm born children only)
- EEG (recording brain activity)
- MRI (brain scan)



Support for travel and accommodation will be offered to families travelling from regional and rural Queensland, interstate, or New Zealand.

If you would like to find out more about the study please contact:

**Dr Joanne George**

Principal Investigator PREBO-6

07 3069 7371

[j.george2@uq.edu.au](mailto:j.george2@uq.edu.au)



Level 6, Centre for Children's Health Research, 62 Graham St, South Brisbane QLD 4101  
Ph 07 3069 7370 | Email qcprrc@uq.edu.au | PREBO-6 Study Flyer V2.0 12 February 2019